



WASTE CONNECTIONS
Connect with the Future

Waste Connections Sustainability Campus

July 2023

The Roadmap



The Urban Landfill

...and its Integration into the Community

What is Champ?





Spanish Village

Graham Packaging

Riverport

Champ Landfill - North Pit

Fred Weber, Inc. North Stone Quarry

Hollywood Casino Amphitheatre

Champ Landfill - South Pit

Champ, MO

Pattonville Fire District

Breckenridge Concrete Plant

Pattonville High School

Grace Church

North Stone Stockyard

Maryland Heights Renewable Energy Facility

Unused Greenhouses

North Stone Asphalt Plant

Rose Acres

Rose Acres

Rose Acres Grade School

Operating Values



- Safety
- Integrity
- Customer Service
- Be a Great Place to Work

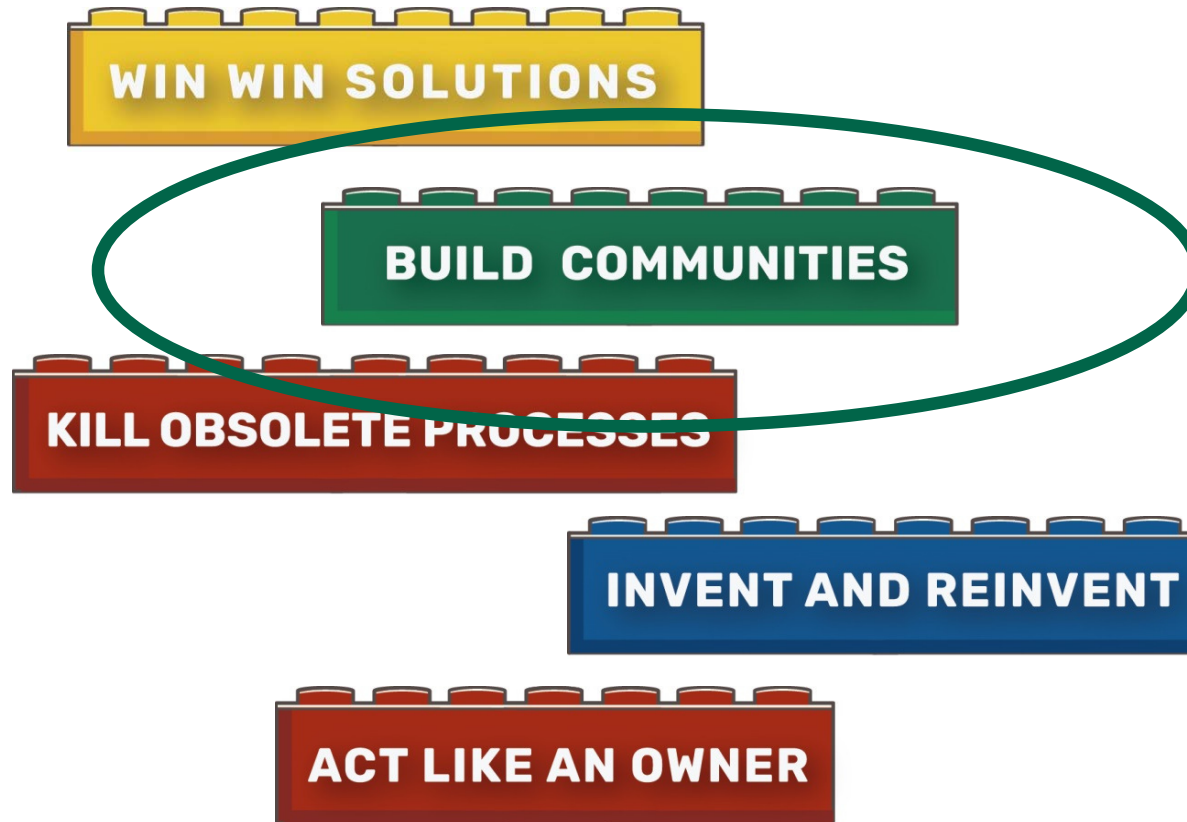
➤ **Be THE Premier**

Landfill

in

Missouri

Road to Premier



The Original Vision

City of Maryland Heights



WELCOME TO GROW MARYLAND HEIGHTS FOUNDATION

- How we can grow our community
 - Corporate Involvement
 - Community Involvement
 - Grant Opportunities

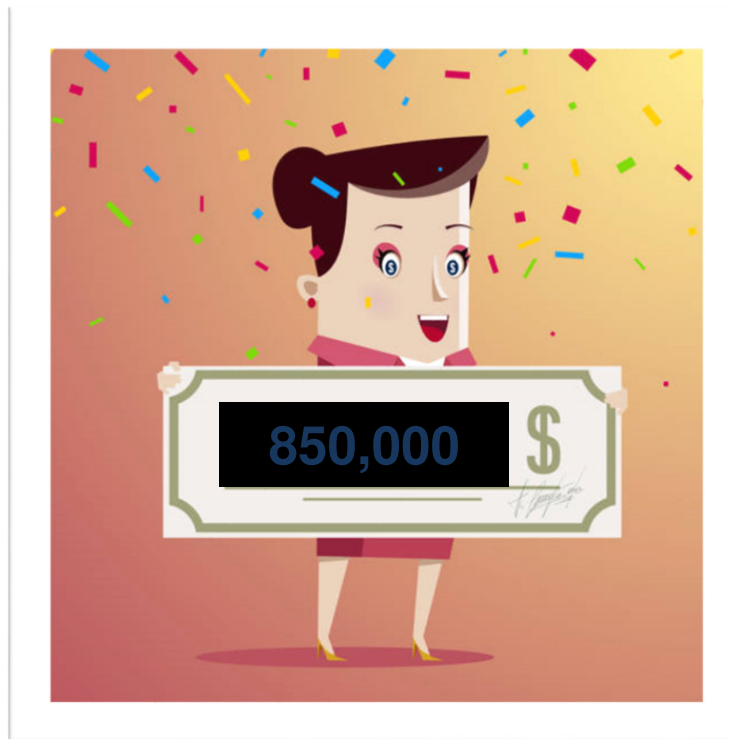


HOW IT STARTED

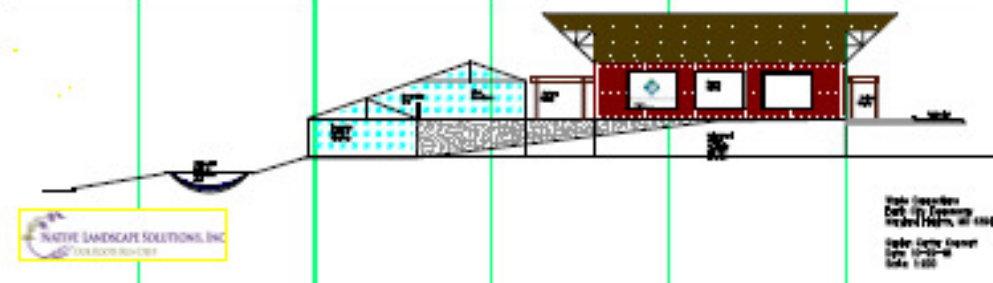
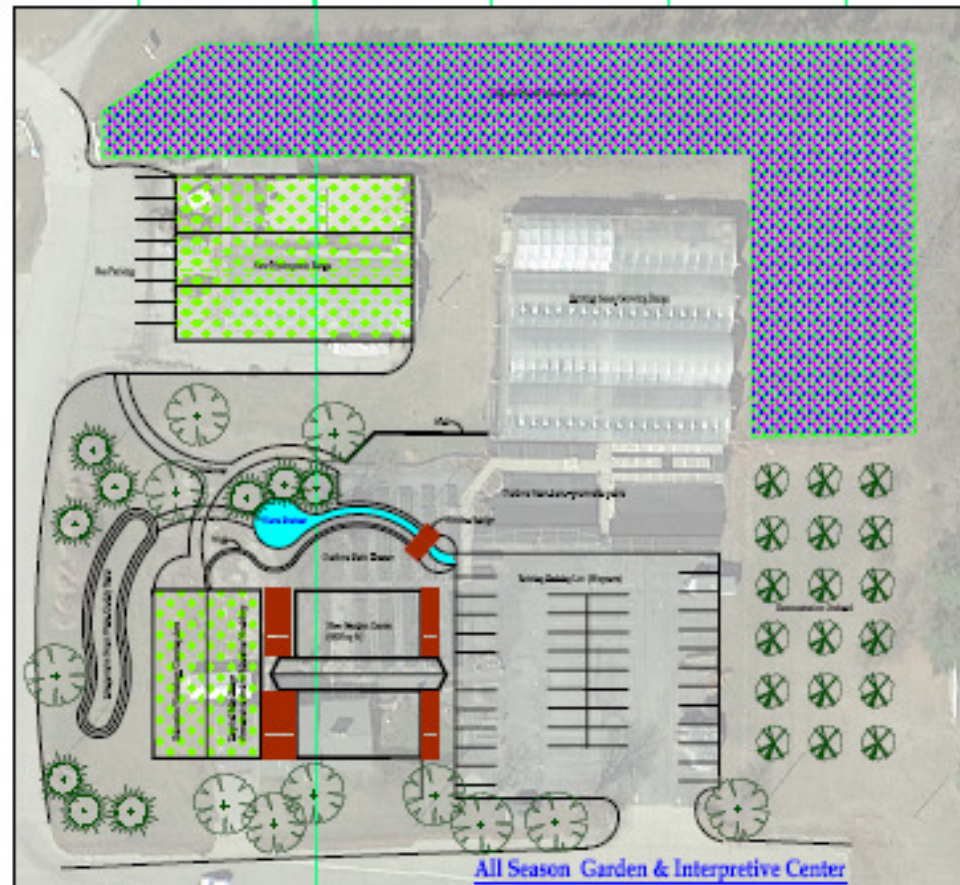


- Early 90's - Fred Weber was testing Methane gas as a way to heat greenhouses and offered the Jaeger family a place to live and an opportunity to use their greenhouses located near the landfill and quarry in MH
- Heating with methane gas was successful and saved the Jaeger family **12k-15k** per year in operational costs!!!
- Jaeger Greenhouses continued their success until they closed their doors in 2017

ASK & YOU SHALL RECEIVE



- The City of Maryland Heights was Awarded \$850,000 to support our proposed Greenhouse, Garden, and Sustainability Center Project



PARTNERSHIPS

- Champ Landfill/Waste Connections Agreement
 - Invested in Renewable Energy Project on Old Jaeger Site
 - Sustainability Campus moved to site adjacent to Pattonville High School

- Pattonville High School Life Sciences Program to benefit
 - Full use and operation of 1 High Yield greenhouse

- Community Involvement to assist in the development of programs



City of
MARYLAND HEIGHTS



WASTE CONNECTIONS
Connect with the Future



GREENHOUSES

Ceres Greenhouses are Energy-efficient greenhouses, built with sustainability in mind.



- Minimal operation costs
 - Waste Connections to supply Methane to heat the greenhouses
 - Solar Energy Used for Control Systems



- 2 – High Yield 30' x 81'
- Climate Control Systems
- Creating optimal & abundant year-round growing environment



PATTONVILLE HIGHSCHOOL



- Life Science Program
- Full control of 1 - 30' X 81' High Yield Greenhouse
- Classroom in Headhouse
- Aquaponics System
- Continue to provide healthy food to those in need

DESIGN INSPIRATION



SUSTAINABLE DESIGN OPTIONS STRATEGIES



- Educational Trail Systems
- Community Gardens
- Rain Gardens
- Pollinator Gardens
- Public Access to MH Greenhouse
- So Much More

The Grant



original. Many residents are not aware that one of the largest upcycling operations is occurring right in their own backyard– the Champ Landfill. Owned and operated by

original. Many residents are not aware that one of the largest upcycling operations is occurring right in their own backyard– the Champ Landfill. Owned and operated by Waste Connections, the Champ Landfill generates methane gas that is then transferred to the Ameren Renewable Energy Center where it is transformed into electricity. This electricity powers several residences and businesses in the area, including the former Jaeger Greenhouse.

electricity powers several residences and businesses in the area, including the former Jaeger Greenhouse.

Secure Document Destruction/ Paper Shredding Event, August 1

Pg. 5

Many residents have fond memories of Jaeger Greenhouse, which was located on Creve

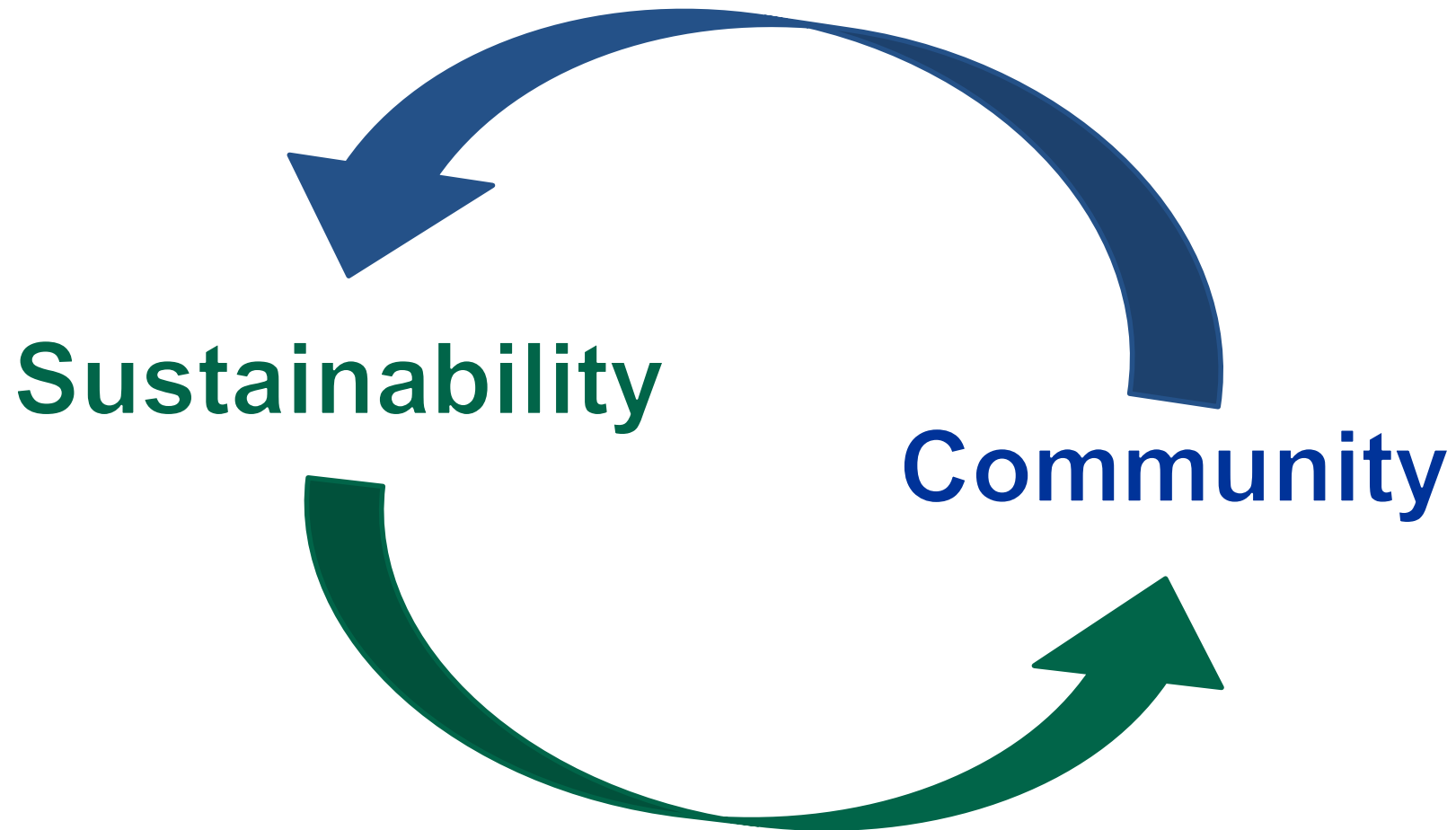
provide educational oppo
protection and sustainal

Fund which is a component fund of
the property, the City hopes to do its part in promoting a green lifestyle and education on our
education," says Economic Development Manager Jim Carver. This project has the potential to become a regional destination. Several cities operate nature, historical or educational centers. Having an interpretive center focused on sustainability and renewable resources is truly a unique opportunity."

"This project has the potential to become a regional destination."

The Vision 2.0

Waste Connections with City of Maryland Heights



Sustainability – Three Pillars



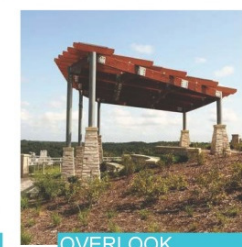
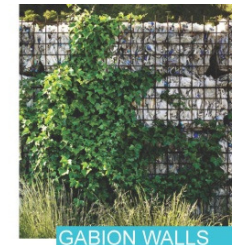
High Strength MSW Leachate Treatment to Near Drinking Water Quality? Yes and Sustainable! Brown and Caldwell, 2016 GWMS



Phase 2 – Public/Private Partnership



- 1 FUTURE RENEWABLE ENERGY PROJECT
- 2 LANDSCAPE BERMS
- 3 FUTURE SUSTAINABILITY DEVELOPMENT
- 4 EXISTING PAVILION
- 5 RELOCATED GREENHOUSE RANGE
- 6 RETAIL/SALES AREA
- 7 RELOCATED GREENHOUSES
- 8 OFFICE COMPLEX
- 9 FUTURE PAVILION/OUTDOOR CLASSROOM
- 10 PARKING
- 11 HILLSIDE PRAIRIE RESTORATION
- 12 ADJACENT HIGH SCHOOL
- 13 TRAILS
- 14 PERMANENT OVERLOOK
- 15 OVERLOOK
- 16 BIORETENTION AREA



Champ Landfill

SUSTAINABILITY CAMPUS PLAN



CHAMP LANDFILL
A Waste Connections Company

Weaver Consultants Group

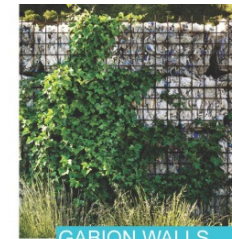


guernsey

Phase 2 – Public/Private Partnership



- | | | | |
|-------------------------------------|------------------------------|-------------------------------------|---------------------------------|
| 1 FUTURE RENEWABLE ENERGY PROJECT | 4 EXISTING PAVILION | 7 RELOCATED GREENHOUSES | 10 PARKING |
| 2 LANDSCAPE BERMS | 5 RELOCATED GREENHOUSE RANGE | 8 OFFICE COMPLEX | 11 HILLSIDE PRAIRIE RESTORATION |
| 3 FUTURE SUSTAINABILITY DEVELOPMENT | 6 RETAIL/SALES AREA | 9 FUTURE PAVILION/OUTDOOR CLASSROOM | 12 ADJACENT HIGH SCHOOL |
| | | | 13 TRAILS |
| | | | 14 PERMANENT OVERLOOK |
| | | | 15 OVERLOOK |
| | | | 16 BIORETENTION AREA |



GABION WALLS



DETAILED EDGE



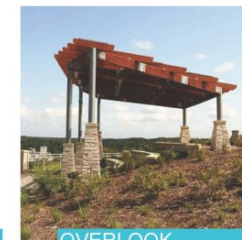
EDUCATION



WAYFINDING



HILLSIDE PRAIRIE



OVERLOOK



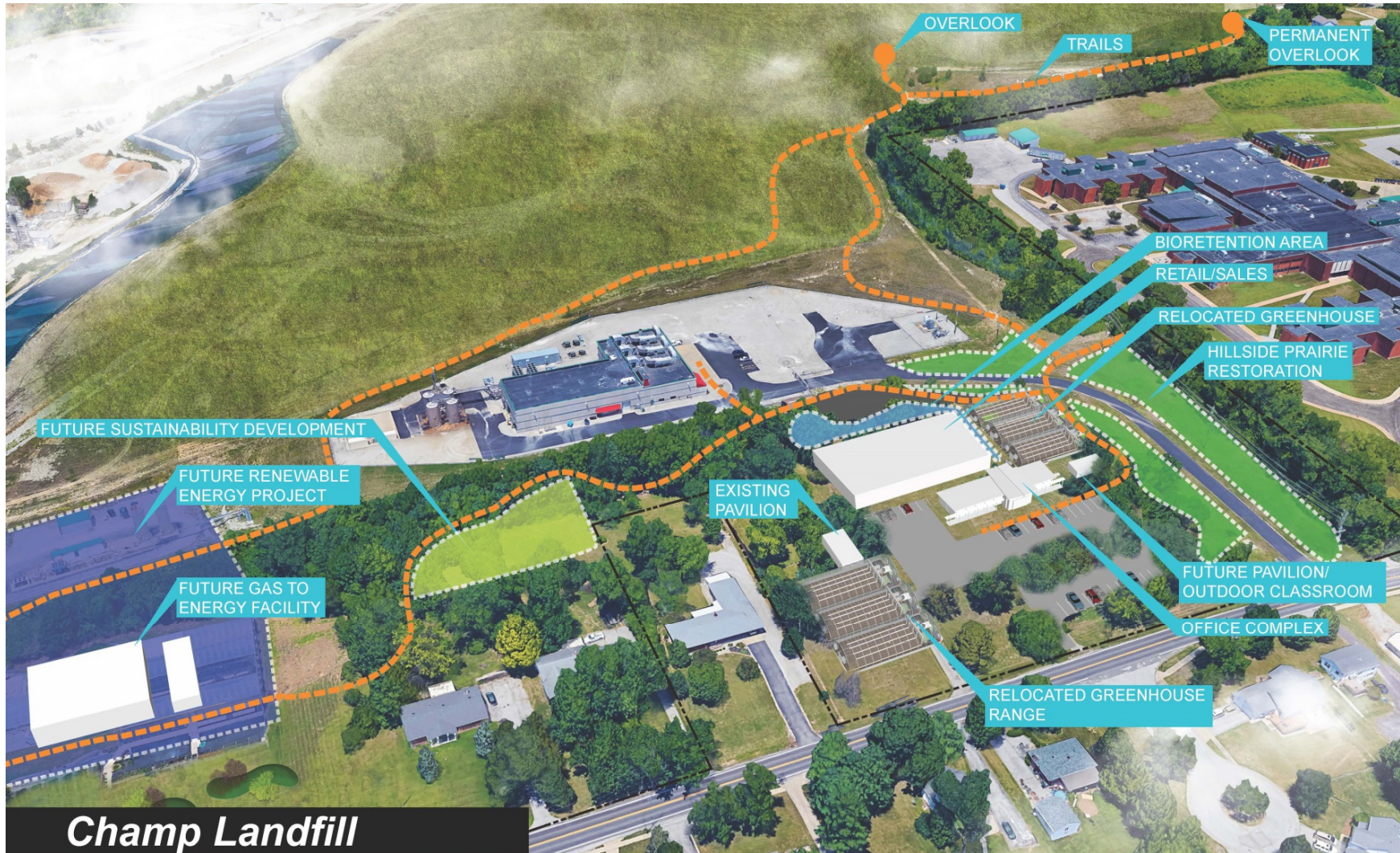
TRAIL SECTION

Champ Landfill

SUSTAINABILITY CAMPUS PLAN

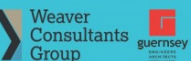


Phase 2 – Public/Private Partnership



Champ Landfill

SUSTAINABILITY CAMPUS VIEW

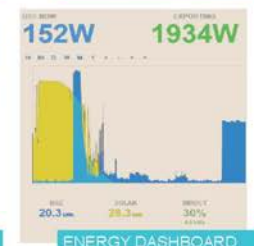
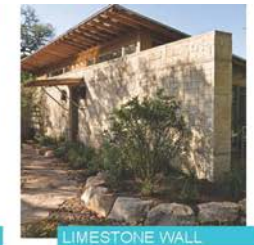


Phase 2 – Public/Private Partnership

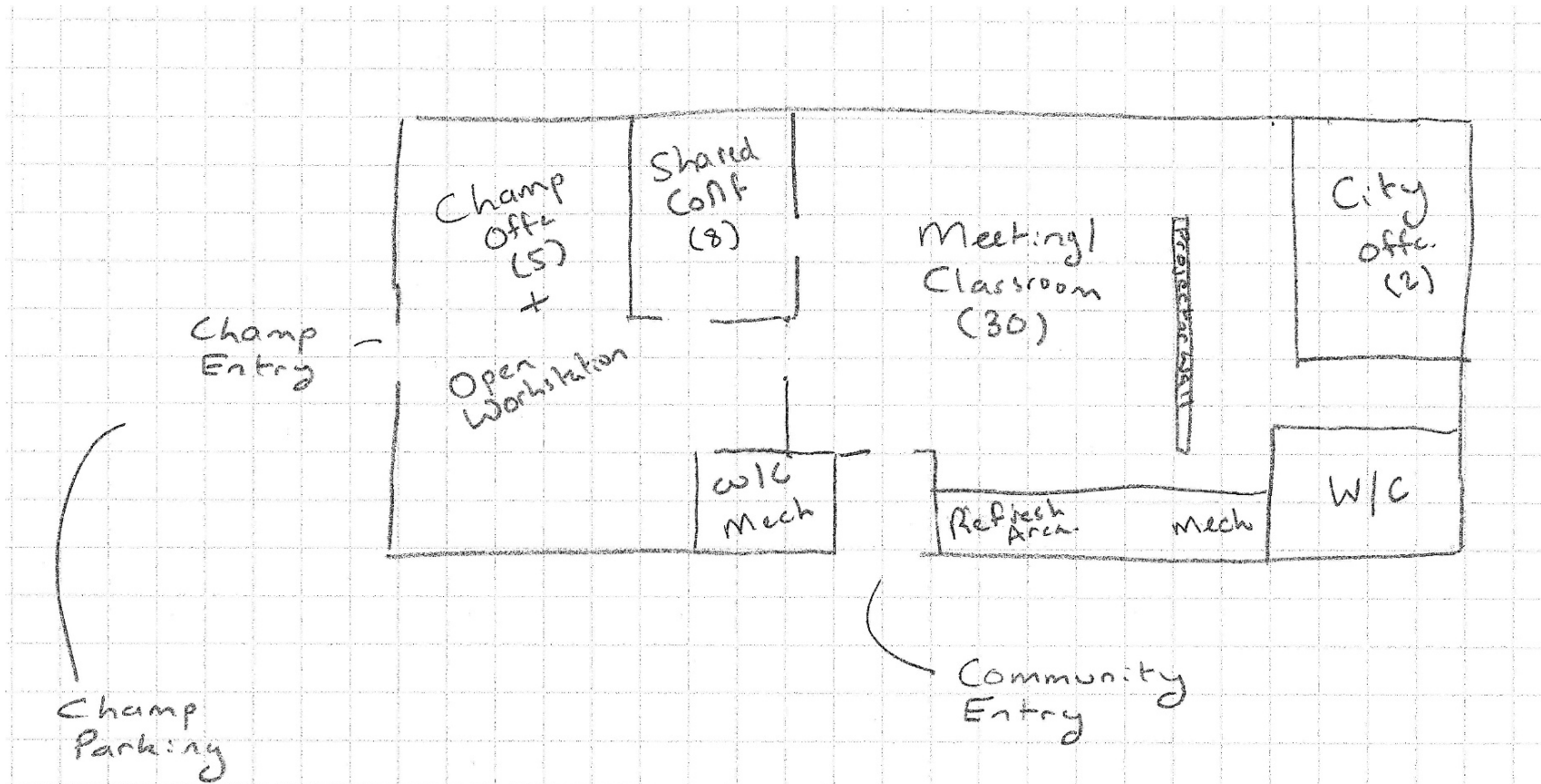


Champ Landfill

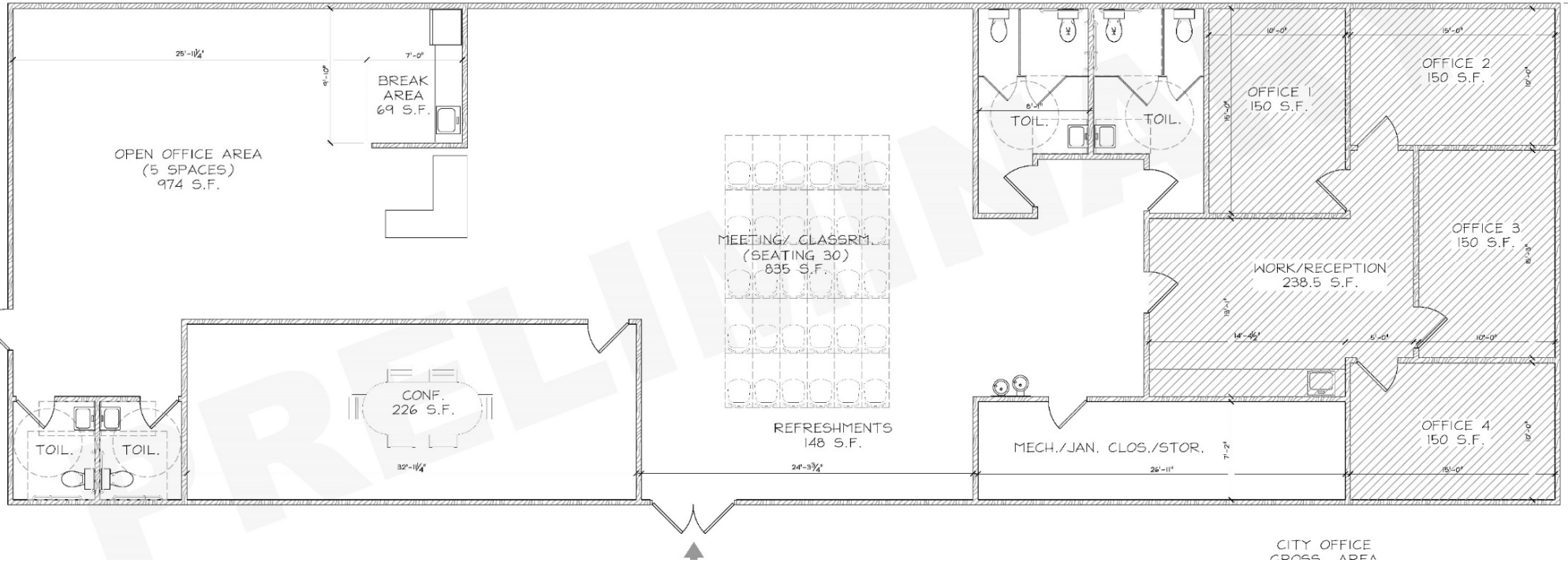
SUSTAINABILITY CAMPUS OFFICE



Original Concepts



Original Concepts



The Vision 3.0

Waste Connections

Sustainability Campus

Phase 2



JUST MOMS STL
west lake landfill



City of
MARYLAND HEIGHTS



PATTONVILLE
HIGH SCHOOL
PRIDE • HONOR • SPIRIT



Champ Sustainability



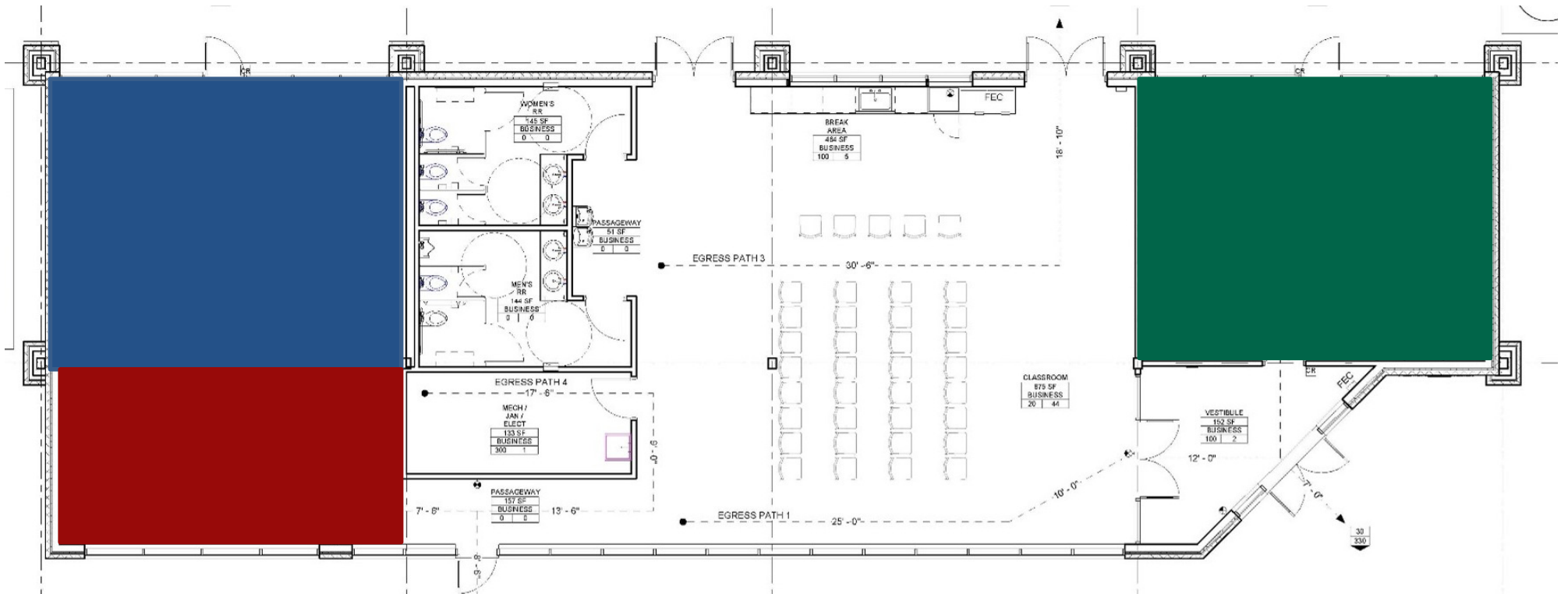
Sustainability Campus

Interpretive Center



- Champ/Maryland Heights Offices
- Shared Conference Room
- Interactive Exhibits
- Classroom

Final Concepts



Alas

 **Think Big.**
Act Small.



Welcome...



...to...

 **Think Big.**
Act Small.



Inside!



Inside!



Greenhouses



- Pattonville HS Classroom – Hydroponics
- National Plant-Based Research Company

Greenhouses

 **Think Big.**
Act Small.



Carver Barn



We got bees!



These surprise tenants were found all within the barn, so we immediately contacted local beekeepers to discuss moving them out of the barn wall and into a brand new hive on-site

We got bees!



We got bees!



Native Planting



- As part of landfill buffer areas
- Around campus
- Bioretention areas
- As intermediate cover



Maryland Heights Native Prairie





Reimagining Vegetation



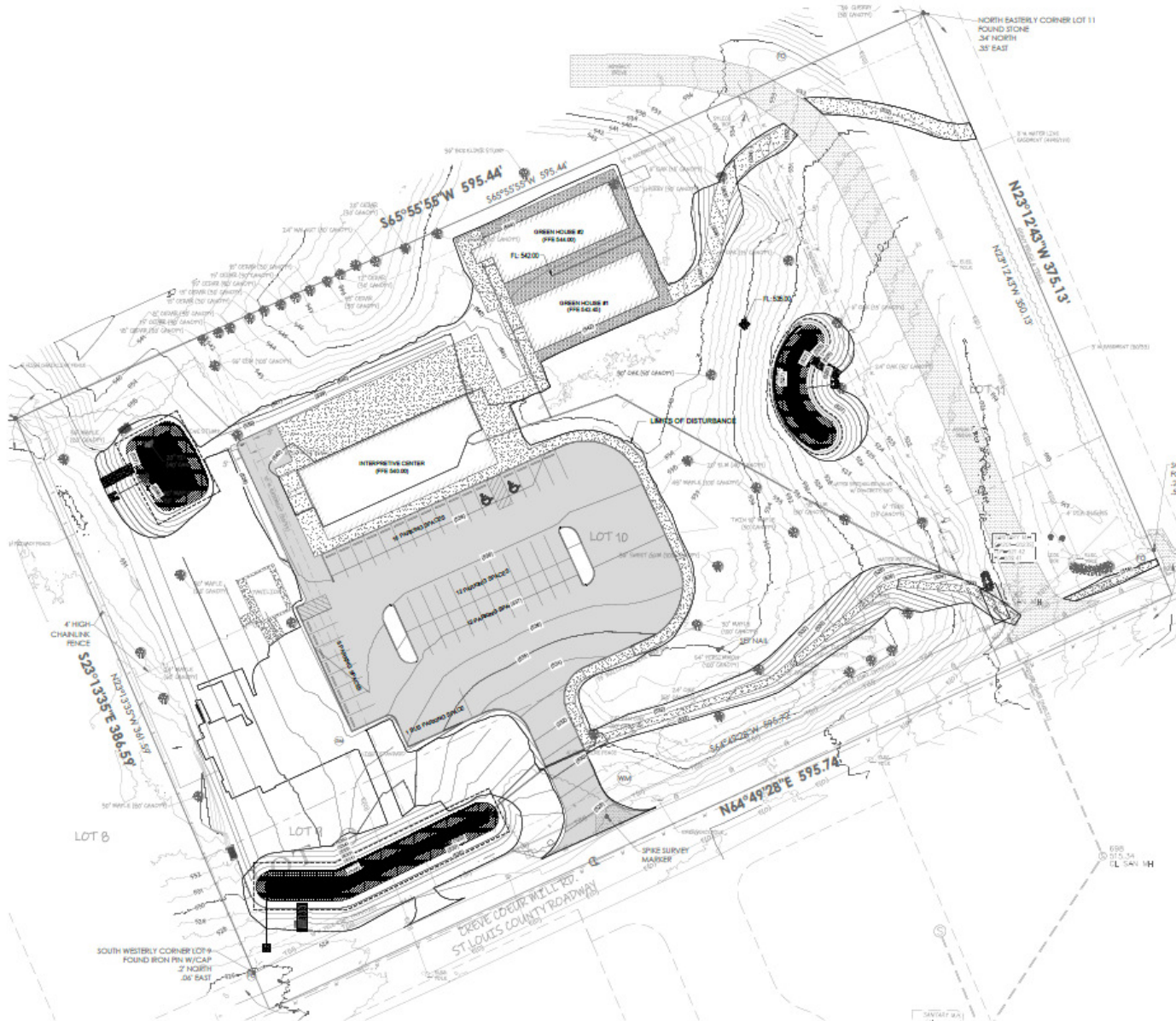
Reimagining Vegetation



Reimagining Vegetation



Bioretention with Natives



Trail System



- Guided by LF personnel or Pattonville HS-trained students
- Two overlooks into Landfill and Quarry

Educational Trail System



Educational Trail System



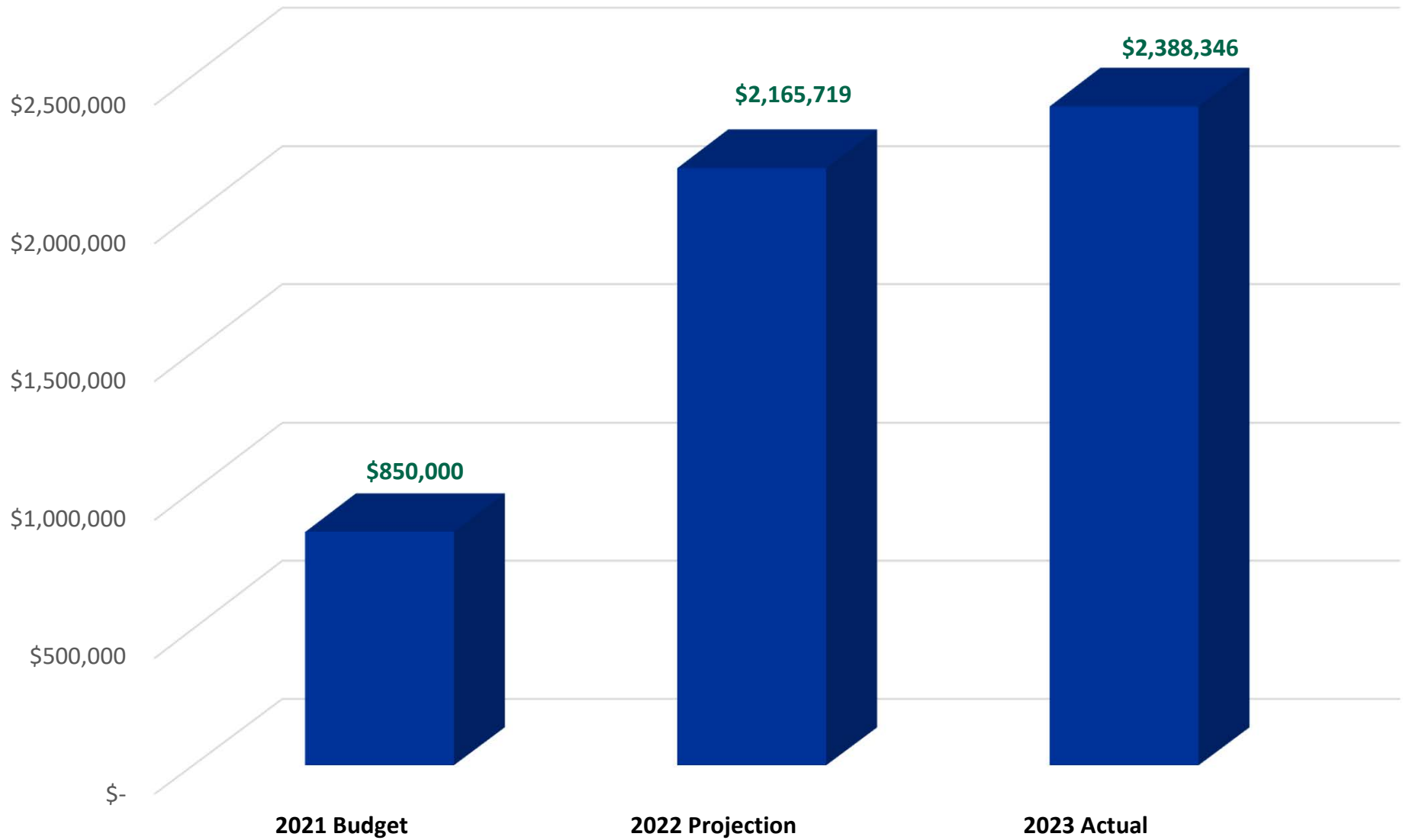
Educational Trail System



Construction

The Public-Private Partnership

Just a Tad Off



Before the Campus...



...after Ben.



Bring on the Greenhouses



Bring on the Greenhouses



And Now for the Interpretive Center



And Now for the Interpretive Center



And Now for the Interpretive Center



And Now for the Interpretive Center



And Now for the Interpretive Center



And Now for the Interpretive Center



And Now for the Interpretive Center



And Now for the Interpretive Center



Bioretention with Natives



Bioretention with Natives



Bioretention with Natives



Starting to Come Together



Starting to Come Together



SCHEDULE SLIDE



Expectation



Reality



Starting to Come Together



Starting to Come Together



Starting to Come Together



From...

 **Think Big.**
Act Small.



...to.



Inside



Inside



Inside



...to.

 **Think Big.**
Act Small.



The Legacy

Next Phases and Beyond

Phase 2



CULTIVATING YOUNG LEADERS



COMMUNITY COOPERATIVE



HOST ENVIRONMENTAL SERVICE PROJECTS

Takeaways

Takeaways



- Landfills have the obligations to be good neighbors...
 - and the opportunity to become part of the community.
- Landfills are a utility, community need, and a form of recycling/green energy
- Opportunities for public/private partnerships exists, as do the benefits
- Sustainable projects should be celebrated by all

Sustainability



Community

WASTE CONNECTIONS
Connect with the Future®

