



**TAB**  
Technical Assistance  
to Brownfields

**KANSAS STATE**  
UNIVERSITY

# **Free Help, Just Ask!**

## **KSU Technical Assistance to Brownfields (TAB)**

Maggie Belanger, Assistant Director  
July 2023

[ksutab.org](https://ksutab.org)

# Do you have a brownfields property?

Have you experienced or seen these type of properties in you community?



# Brownfields?





# Challenges, Obstacles & Where to Begin?

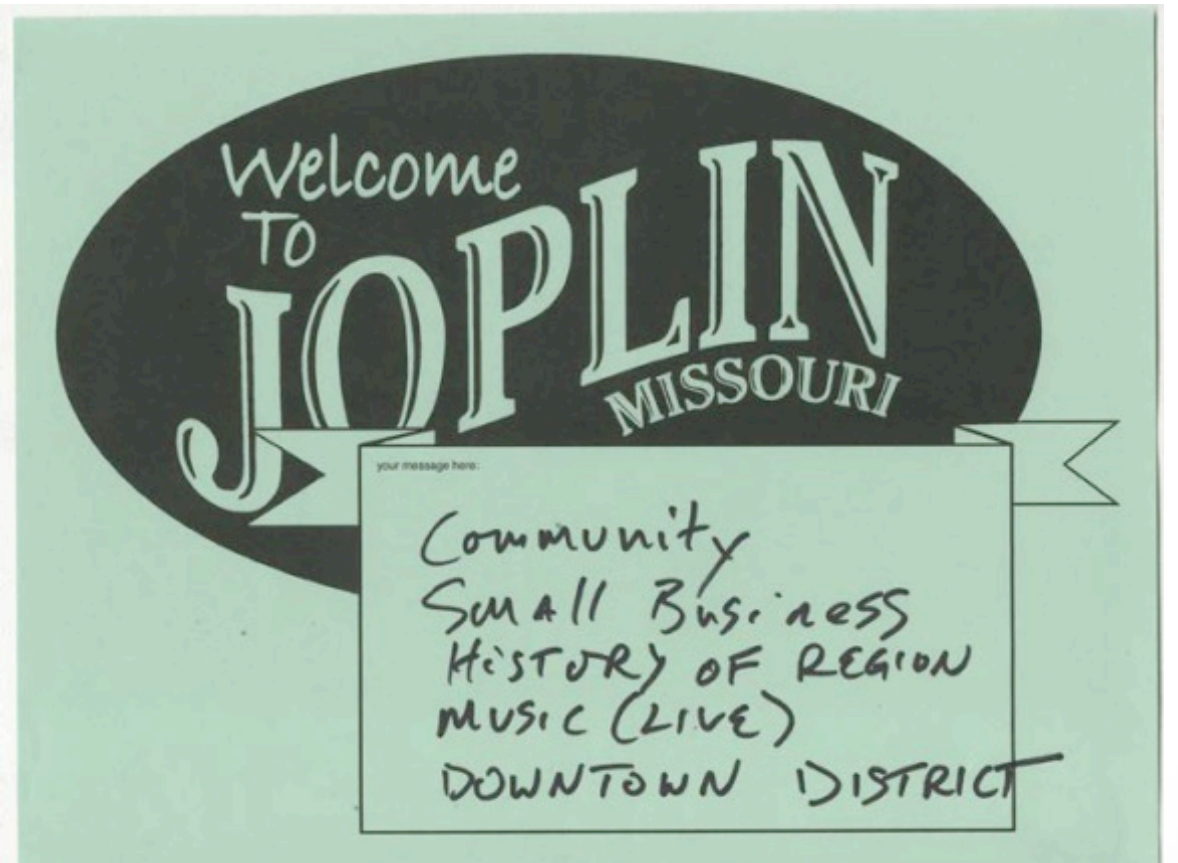
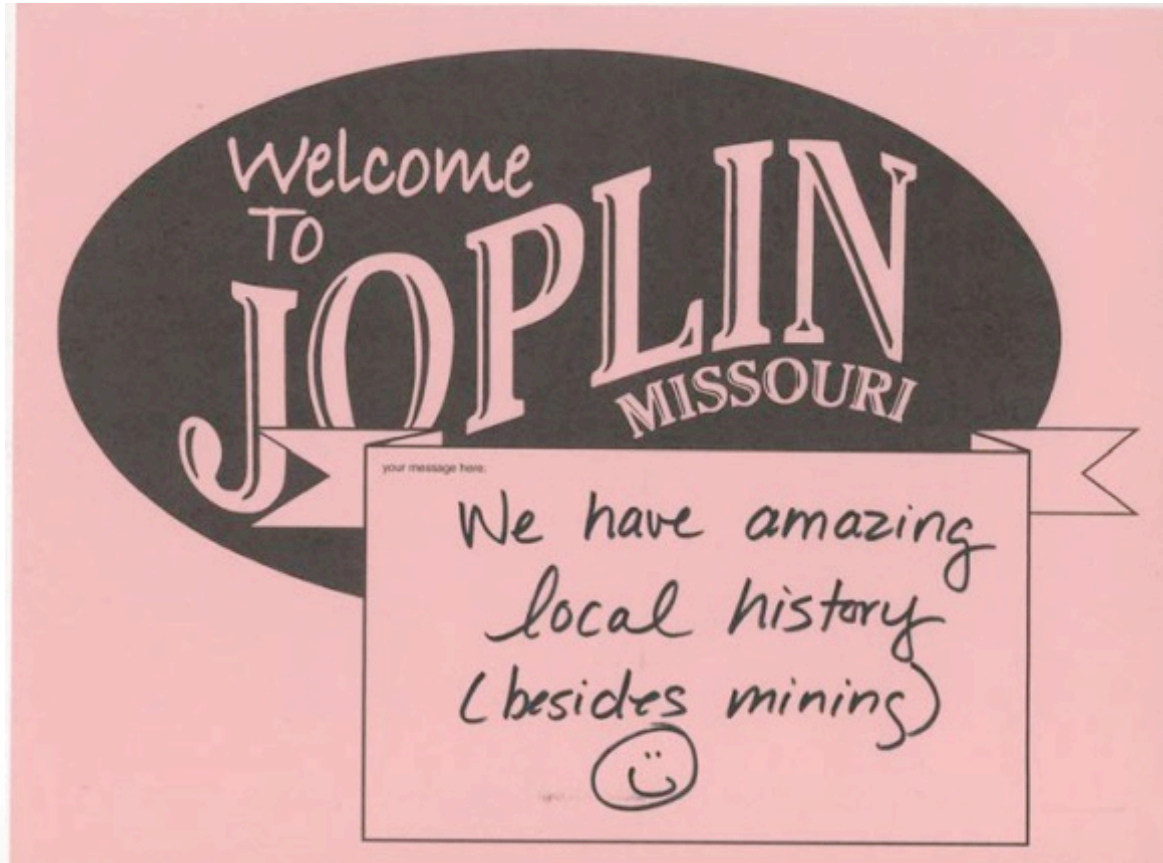


# Brownfields Transformed





# Community



# You are not alone

**KSU TAB is here to help with FREE technical assistance**



- **Identify & Prioritize Properties**
- **Evaluate & analyze community strengths, weaknesses, opportunities, assets and threats**
- **Strategic planning and establish goals for community revitalization**
- **Community outreach and input**
- **Identify funding opportunities**

# KSU TAB and Partners Resources

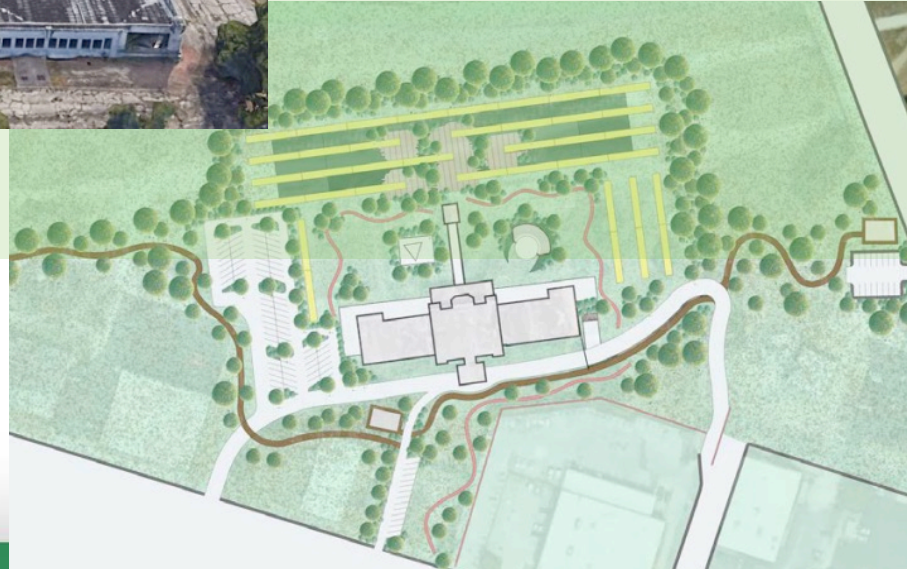
- Brownfield Assessment and Cleanup
- Redevelopment Strategies
- Site Design
- Leveraging Funds
- Public/Private Partnerships
- Economic Impact Analysis
- Market Studies
- Real Estate Finance
- Tribal Brownfields funding
- Solid and Hazardous Waste
- Infrastructure and Transportation
- Community Engagement
- Area Wide Planning
- Public Housing
- Historic Preservation
- EJ Outreach and Involvement
- Indigenous Planning
- Sustainability
- Resilience
- Community Gardens
- Healthfields
- Database Management





# Transformation of Properties

## Community Reuse Visioning – Adaptive Reuse Plan, Former Train Depot Joplin, MO



- Students research background, demographics and history of Joplin
- Meetings with local government officials & key stakeholders
- Facilitated roundtable discussions with community at large
- Farmer's Market Open Opinion Survey

# Funding Transformation

## Economic Tools

OPPORTUNITY	PURPOSE	AMOUNT & MATCH	ANTICIPATED DEADLINE	NOTES
<b>ECONOMIC DEVELOPMENT &amp; NEIGHBORHOOD REVITALIZATION</b>				
<a href="#">EDA Regional Innovation Strategies i6 Grant</a>	<ul style="list-style-type: none"> <li>To support proof of concept and commercialization assistance</li> <li>To support operations for early-stage risk capital to entrepreneurs</li> </ul>	<ul style="list-style-type: none"> <li>Up to \$750,000</li> <li>50% non-federal match required</li> </ul>	<ul style="list-style-type: none"> <li>August 29, 2018</li> </ul>	<ul style="list-style-type: none"> <li>Discuss with U.S. EDA regional contact Don Kathan at 312.789.9765 or <a href="mailto:dkathan@eda.gov">dkathan@eda.gov</a></li> </ul>
<a href="#">U.S. EDA Public Works &amp; Economic Development Facilities Grant</a>	<ul style="list-style-type: none"> <li>For public infrastructure and site development that supports quality economic development and high-skills jobs</li> </ul>	<ul style="list-style-type: none"> <li>Average grant is \$1million, but up to \$3 million</li> <li>50% match</li> </ul>	<ul style="list-style-type: none"> <li>Ongoing</li> </ul>	<ul style="list-style-type: none"> <li>Discuss with U.S. EDA EDR Lee Shirey at 312.789.9751 or <a href="mailto:lshirey@eda.gov">lshirey@eda.gov</a></li> <li>Green Bay has <a href="#">eligible census tracts</a>, in the Shipyard, Rail Yard, and Velp Corridor, to qualify under EDA per capita income requirements</li> </ul>
<a href="#">U.S. Economic Development Administration Regional Economic Diversification Summit</a>	<ul style="list-style-type: none"> <li>To convene federal agency officials to discuss economic challenges and opportunities to grow and leverage funding</li> </ul>	<ul style="list-style-type: none"> <li>Technical Assistance</li> </ul>	<ul style="list-style-type: none"> <li>Rolling</li> </ul>	<ul style="list-style-type: none"> <li>Discuss with U.S. EDA EDR Lee Shirey as to whether it makes sense for a REDS to follow the roundtable planning sessions that Green Bay has recently held</li> </ul>
<a href="#">SBA Growth Accelerator Grant</a>	<ul style="list-style-type: none"> <li>For accelerators and incubators which support startups and entrepreneurs</li> </ul>	<ul style="list-style-type: none"> <li>\$50,000</li> <li>No match</li> </ul>	<ul style="list-style-type: none"> <li>Summer 2018</li> </ul>	<ul style="list-style-type: none"> <li>SBA Deputy Associate Administrator Michele Schimpp, at 202.205.6510</li> <li>Could support work in the Rail Yard Innovation District</li> </ul>

- **Feasibility Study, Highest and Best Use Market Analysis**
- **Resource Roadmap**
- **U.S. EPA Brownfields Grant Application Support**

# TAB EZ

## Grant Support

The screenshot displays the 'My Grant Applications' page in the TAB EZ system. The page features a navigation menu at the top with options like Home, About, Events, Online Tools, Resources, Tribal TAB, and Contact. A user profile 'Maggie' is visible in the top right. The main content area shows a grid of application cards, each with a title, user name, and date. Below the grid, there is a 'Welcome To TAB EZ' section with introductory text and a 'Helpful Links' sidebar. At the bottom, there are links for 'Sample Grant Applications' and 'How to use TAB EZ'. The footer includes logos for Kansas State University and CABEM Technologies.

Application Title	User	Date	Actions
Cynthia's test	Cynthia Annett	07/03/2022	Edit Delete
test 001	Maggie Weiser	06/21/2022	Edit Delete
OVERVIEW Test 2022 June	Maggie Weiser	06/21/2022	Edit Delete
Debi FY23 Assessment	Debi Morey	06/13/2022	Edit Delete
2022 June Assess Test	Maggie Weiser	06/13/2022	Edit Delete
15 Oct. RLF Final Check	Maggie Weiser	10/15/2021	Edit Delete

**Welcome To TAB EZ**  
TAB EZ (Technical Assistance to Brownfields (TAB) easy brownfields grant application (EZ) software program) provides a template, configured for the type of U.S. EPA Brownfields Multipurpose, Assessment, Revolving Loan Fund (RLF), or Cleanup (a.k.a. MARC) grant application you are writing. Content written in TAB EZ can be exported to a Microsoft Word (.doc) file for final editing, formatting and packaging before submittal.

**Helpful Links**

- Definitions
- Acronyms
- Assessment Grant Help
- Cleanup Grant Help
- Stastics / Census Information
- Helpful Hints
- Revolving Loan Fund Grant Help

How do I start a grant application? ▾  
Sample Grant Applications ▾  
How to use TAB EZ ▾

## TAB EZ

- Very user friendly
- Helpful hints for addressing grant criteria
- Lots of related resources including examples of past successful applications
- Updated each year to reflect that year's grant guidelines
- Multiple users can collaborate on a single application
- Content in TAB EZ is password protected
- Free for anyone to use

## Other TAB Support

- Review and feedback on draft U.S. EPA Brownfields Grant Applications





**TAB**  
Technical Assistance  
to Brownfields

**KANSAS STATE**  
UNIVERSITY

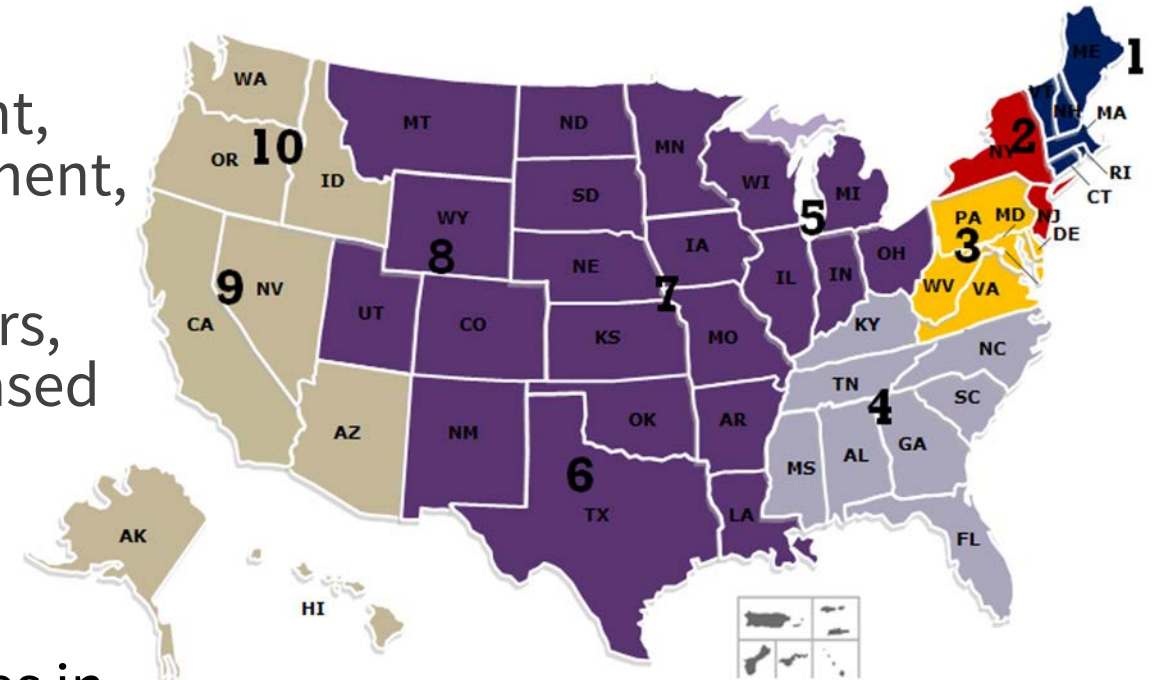
# Got a Brownfields? We can help.

Maggie Belanger, Assistant Director  
July 2023

[ksutab.org](https://ksutab.org)

# KSU Technical Assistance to Brownfields (TAB)

- Direct technical assistance on full range of brownfields topics -- community involvement, health impacts, finance, liability, redevelopment, and grant writing
- Assistance includes: workshops and webinars, one-on-one assistance, case studies, web-based tools
- Services provided are **FREE** and tailored to specific needs
- [Kansas State University](#) assists communities in EPA Regions 5, 6, 7 & 8



# Contact Info

## Maggie Belanger

---

KSU TAB, Assistant Director  
[maggiejessie@ksu.edu](mailto:maggiejessie@ksu.edu)

784.532.0782

## Sabine Martin

---

State of Missouri TAB POC, CTOR Solutions,  
KSU TAB Partner  
[smartin@ctorsolutions.com](mailto:smartin@ctorsolutions.com)

785.340.5333

## Jennifer Clancey

---

KSU TAB Services Coordinator, EPA Region 7  
[jmclancey@ksu.edu](mailto:jmclancey@ksu.edu)

319.270.3394



[ksutab.org](https://ksutab.org)





**TAB**  
Technical Assistance  
to Brownfields

**KANSAS STATE**  
UNIVERSITY

# Thank You